

Hamouro

0 100 200 m



PHMA

- PHMA actuelle (2,52m NGM - 4,3m SHOM)
- PHMA + 20cm (2,72m NGM - 4,5m SHOM)
- PHMA + 50cm (3,02m NGM - 4,8m SHOM)



Bandrélé Nord

0 100 200 m



PHMA

- PHMA actuelle (2,52m NGM - 4,3m SHOM)
- PHMA + 20cm (2,72m NGM - 4,5m SHOM)
- PHMA + 50cm (3,02m NGM - 4,8m SHOM)



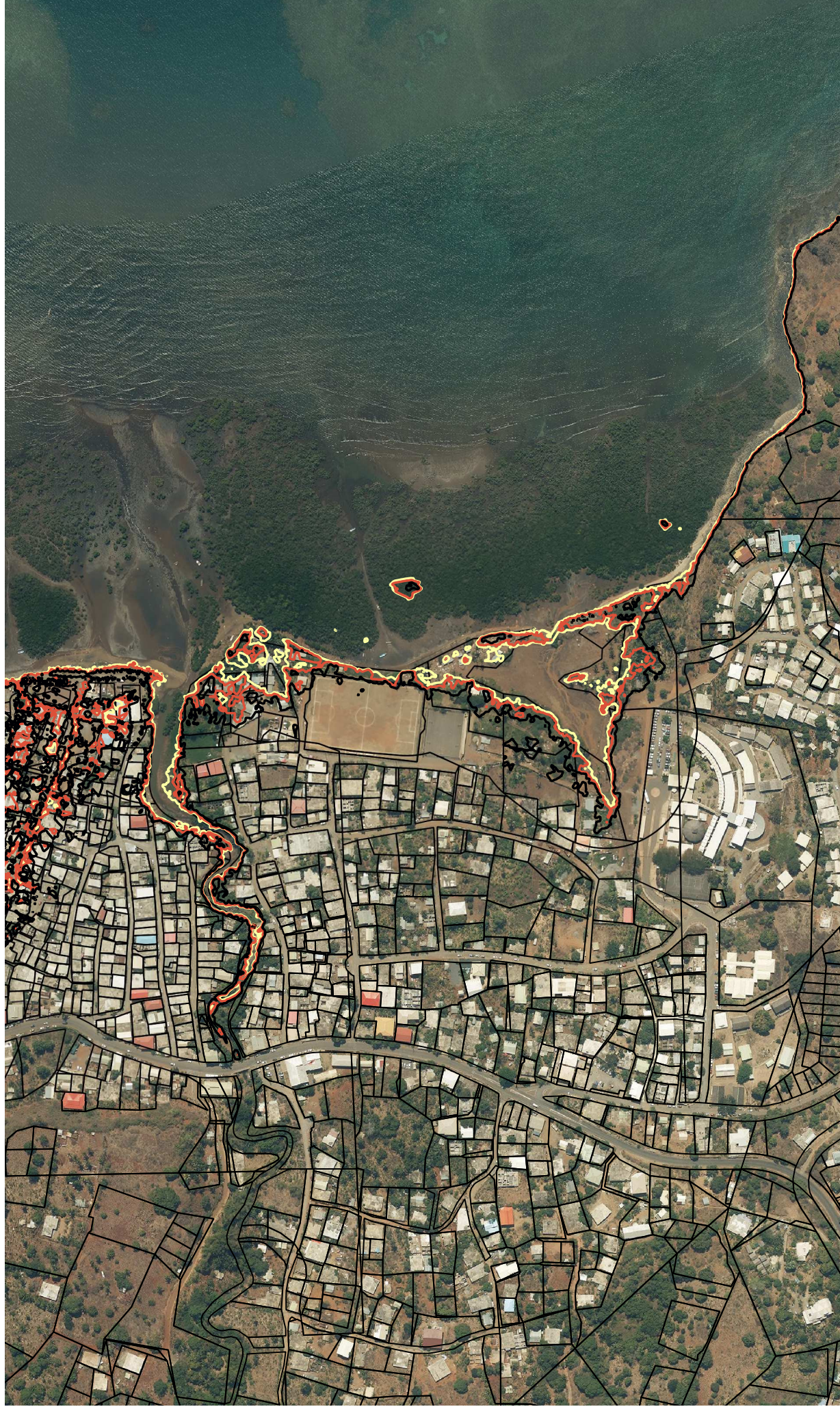
Bandrélé Sud

0 100 200 m



PHMA

- PHMA actuelle (2,52m NGM - 4,3m SHOM)
- PHMA + 20cm (2,72m NGM - 4,5m SHOM)
- PHMA + 50cm (3,02m NGM - 4,8m SHOM)



Bandrélé - Bambo Est

0 100 200 m



PHMA

- PHMA actuelle (2,52m NGM - 4,3m SHOM)
- PHMA + 20cm (2,72m NGM - 4,5m SHOM)
- PHMA + 50cm (3,02m NGM - 4,8m SHOM)



Bambo Est

0 100 200 m



PHMA

- PHMA actuelle (2,52m NGM - 4,3m SHOM)
- PHMA + 20cm (2,72m NGM - 4,5m SHOM)
- PHMA + 50cm (3,02m NGM - 4,8m SHOM)



Mtsamoudou

0 100 200 m

PHMA

- PHMA actuelle (2,52m NGM - 4,3m SHOM)
- PHMA + 20cm (2,72m NGM - 4,5m SHOM)
- PHMA + 50cm (3,02m NGM - 4,8m SHOM)

